



volume 2 • number 1 • winter 2007



# FCC *connections*

NEWSLETTER OF THE FOUNDATION FOR CHILDREN WITH CANCER

WWW.CHILDRENWITHCANCER.ORG

314.822.2265

## Long-term Donation Means FCC Can Help Even More Children With Cancer

**A** generous \$100,000 donation by the Herschend Family Foundation to FCC means even more families of children who have pediatric cancer will be helped with financial assistance. “We are thrilled to announce this substantial donation by the Herschend family to Foundation for Children with Cancer,” stated Executive Director Renee Kirkiewicz. The donation will span the next 10 years and Kirkiewicz is hoping this long-term commitment will encourage others to consider the same type of charitable investment in FCC.

“Serving on the board has given me a first-hand glimpse at the challenges families face when confronted with cancer,” FCC Board Chairman Jacob Herschend said. “My family has a tradition of giving back to our community. To be able to extend that tradition and reach out to families all across the country is truly an unbelievable experience.”

FCC currently is able to provide \$500 family grants and is hoping, with generosity such as shown by the Herschend Family Foundation, those grants can be increased to \$1,000 per family. “These families are no different than yours or mine except they have a child who is battling pediatric cancer,” Kirkiewicz went on to say. “We all can relate to the monthly due dates for our mortgage, car payments, utilities and food. These costs don’t stop



**Jacob Herschend**  
FCC Board Chair

*Continued on page 3*

## Inside *this issue*

- Board Profiles ... pages 2-3
- Wine Tasting Photos ... pages 2-3-4
- Honorarium & Memorials ... page 4
- Hats On Day 2007 ... page 5
- BACK COVER: Ways to Support FCC

# Profile:

*Kirk Hutchison*



**K**irk Hutchison is Senior Vice President and Retail Banking Manager of Champion Bank. In that capacity, Mr. Hutchison is responsible for the retail operations of the bank. This includes

consumer lending, small business lending, and bankcards. He came to Champion Bank from UMB Bank where he spent 18 years, most recently as Vice President and Small Business Officer. He also spent time as Banking Center Manager and manager of the direct consumer loan area.

Mr. Hutchison lives in Kirkwood, Missouri, with his wife Ivy and their sons Maxwell and Henry. He is involved with numerous civic and community groups in the Kirkwood area. Currently, this includes serving as the 2007 Greentree Festival Chairperson and as head of the United Service Clubs of Kirkwood, in addition to his service on the board of Foundation for Children with Cancer.

Mr. Hutchison earned his undergraduate degree from the University of Missouri-St. Louis and recently received his MBA from Webster University.

Board Chairman:  
**Jacob Herschend**  
VP, Simply Brilliant VISA

Board Members:  
**Joe Berchelmann**  
Insurance Broker

**Michael Goessling**  
DelRay Consulting & Management, LLC

**Kirk Hutchison**  
VP of Retail Banking,  
Champion Bank

**Karla Jacquin**  
Former Social Worker with  
St. Louis Children's Hospital

**Dr. Tracy Morrison**  
KU Med

**Ann Murphy**

**Mary Weunnenberg**

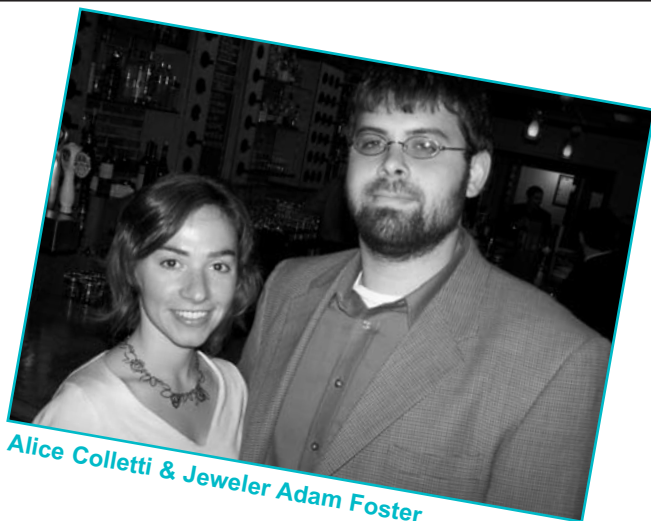
**Michael Zarrilli**  
Suddenlink

Staff:  
**Renee L. Kirkiewicz**  
Executive Director

**Patty Cross**  
Director of Operations

**The mission of Foundation for Children with Cancer is to ease the financial burdens that many families face while pursuing quality healthcare for a child who has cancer.**

**By providing tangible and direct financial support, such as mortgage payments, insurance premiums and utility bills, families are given a greater opportunity to focus on their child's treatment and recovery.**



Alice Colletti & Jeweler Adam Foster



Jamie Allman & FCC Ex. Dir. Renee Kirkiewicz



Jordan & Loni Schnitzer



FCC Board Members Michael Goessling & Dr. Tracy Morrison

# Profile:

*Michael J. Zarrilli*



**M**ichael J. Zarrilli is Senior Counsel and Director of Government Relations for Suddenlink Communications. Headquartered in St. Louis, Suddenlink is the nation's 8th largest provider of broadband telecommunications services, with nearly 1.4 million cable television, high-speed Internet, and telephone customers.

Prior to joining Suddenlink, Mr. Zarrilli was Senior Staff Counsel, Government Relations and Regulatory, for Charter Communications, Inc. While at Charter, Mr. Zarrilli was responsible for negotiating cable television franchise renewals and transfers, cable television regulatory ordinances, and right-of-way management ordinances with local franchising authorities. He also managed field government relations employees and focused on government relations with local franchising authorities, as well as various state and federal officials.

Before Charter, Mr. Zarrilli practiced law with St. Louis-based Behr, Mantovani, McCarter & Potter, P.C. as a litigation associate, concentrating in construction matters.

A St. Louis native, Mr. Zarrilli holds a Juris Doctor from St. Louis University and Bachelor of Arts in Political Science from Indiana University. He is currently licensed to practice law in numerous state and federal courts.

## Herschend Family Foundation Donation:

*Cover Story Continued*

when your child is diagnosed with cancer. We're excited about the opportunity to increase the help we are able to provide."

If you are interested in making a one-time or long-term financial commitment to FCC, please contact the organization at 314.822.2265 or via E-Mail at [info@childrenwithcancer.org](mailto:info@childrenwithcancer.org).

# Honorarium:

*In Memory Of Those Who Went Before Us*

## In Memory of Brenda Grothaus

Mike and Karen Bolte  
Rebecca Bunselmeyer  
Friends and Associates from Central Design  
Bill and Ruth Ann Grothaus  
Wayne Grothaus  
Robert and Mary Limmer  
The Natsis Family  
Monte and Nancy Niemeyer and Family  
bob and Martha Peasel  
Wanda Prinster  
Sr. Gabriella Rogenski  
Larry and Penny Schramm  
Sally Smith  
Gabriel and Vivian Suchman  
Randy and Beth Suchman  
Ernie and Rita Wommack  
Mary Wommack  
Ron and Sherri Zinselmeier

## In Memory of Dr. Gardner Thomas

Lana Webb

## In Memory of George Eliadis

Gabriel and Vivian Suchman

If you would like to honor or remember someone in a special, long lasting way, consider sending a contribution to FCC in their name.

Simply mail us the information and donation. We will send you an acknowledgment letter and notify the designated person with a lovely card.

# A Great Event:

*An "Evening of Indulgence"*

**A**wonderful fall evening was the backdrop for an incredible fundraising event for FCC. Held at the widely acclaimed Erato Wine Bar in St. Louis, an "Evening of Indulgence" brought together friends and acquaintances of FCC who raised money for a great cause while raising a glass of incredible wine to sample. Watch for more exciting events in 2007!

# Hats On Day 2007:

*Revamped For Greater Impact*



In 2006, Hats On Day raised over \$160,000 for FCC --- the highest total in our organization's history. For 2007, to build on that fantastic success, the program has been repackaged to make participation all the easier for schools nationwide. More than 100,000 information kits were sent to schools last November with a 2007 fundraising goal of more than double last year's total!



**In 2006,  
more than \$160,000  
was raised by kids  
across the country  
through the successful  
Hats On Day event**



**For 2007, over  
100,000 fundraising  
kits were sent out to  
schools nationwide  
with a goal of raising  
even more!**

# Want To Help?

## *Add FCC To Your Company's Charity List*

**Y**ou can help FCC by asking your company to add us to its list of charitable programs. If your business has contribution withholding or holds fundraisers for charities, please consider selecting FCC. Remember, your contributions are tax deductible. Does your firm provide matching gifts for employee donations? If you're not sure, ask your human resource department or email The Matching Gifts Clearinghouse at [matchinggifts@case.org](mailto:matchinggifts@case.org) to get them on the list! It's a great way to give!

The mission of Foundation for Children with Cancer is to ease the financial burdens that many families face while pursuing quality healthcare for a child who has cancer. By providing tangible and direct financial support, such as mortgage payments, insurance premiums and utility bills, families are given a greater opportunity to focus on their child's treatment and recovery.



FOUNDATION FOR  
CHILDREN WITH CANCER  
12166 Old Big Bend, Suite 202  
St. Louis, MO 63122  
314.822.2265 • FAX: 314.822.3720  
[www.childrenwithcancer.org](http://www.childrenwithcancer.org)

### Here's a joy-filled New Year's Resolution:

Make an  
ongoing monthly  
pledge of support  
to FCC.

You pick the  
amount.

Signing up is easy.

Visit

[www.  
networkforgood.  
org](http://www.networkforgood.org)

Thank you for  
your support!

PRSRT STD  
US POSTAGE  
**PAID**  
ST. LOUIS MO  
PERMIT NO.